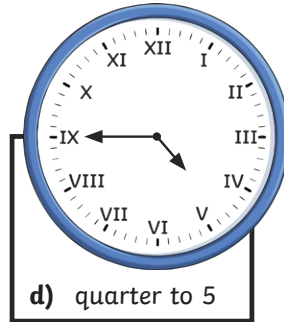
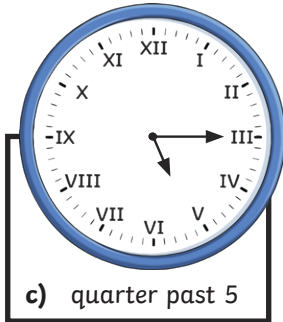
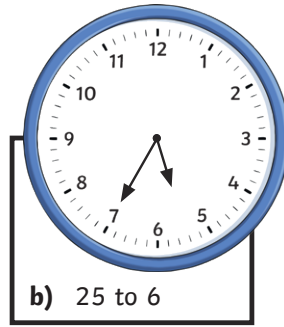
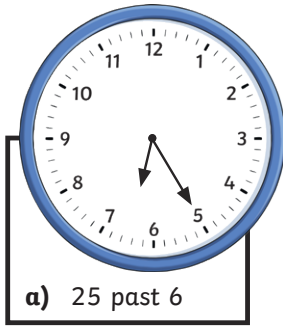




- 1) a) quarter to 1  
 b) 25 minutes past 2

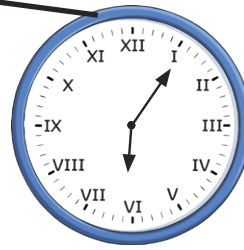
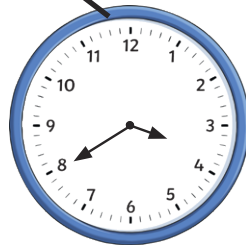
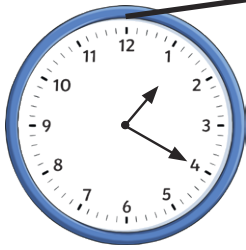
2)



- 3) a) XI  
 b) VIII



- 1) 5 minutes past 6 20 minutes to 4 20 minutes past 3 20 minutes past 1



2)

 <span style="border: 1px solid black; padding: 2px 5px;">2</span>	 <span style="border: 1px solid black; padding: 2px 5px;">1</span>	 <span style="border: 1px solid black; padding: 2px 5px;">6</span>
 <span style="border: 1px solid black; padding: 2px 5px;">4</span>	 <span style="border: 1px solid black; padding: 2px 5px;">3</span>	 <span style="border: 1px solid black; padding: 2px 5px;">5</span>

3) Matthew is correct. The time shows ten minutes to five. The hour hand is not touching 5 o'clock because there are still ten minutes to pass before it is 5 o'clock.



- 1) As the hour hand sits halfway between the 3 and the 4, it is most likely that the time could be half past 3. However, other times close to this may also be considered correct.
- 2) Jenson is correct. VIII represents the number 8 on the clockface.
- 3) a) The second clockface, showing quarter past 1, would have been the latest time that year 3 could have taken their seats.  
b) Year 3 would have been late to the show. The show started at 20 past 1 but they sat down at 25 to 2.
- 4) quarter past any 7 or 8  
half past 7 or 8  
quarter to 8 or 9  
7 o'clock, 8 o'clock or 9 o'clock