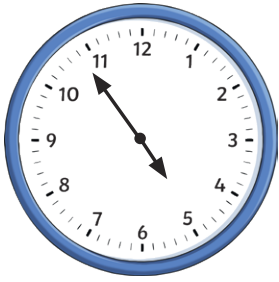


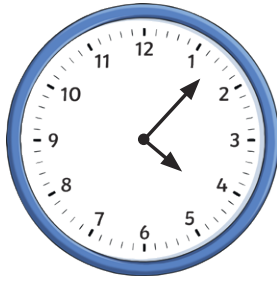


1) It is six minutes past the hour. The time is six minutes past 3.

2) a)



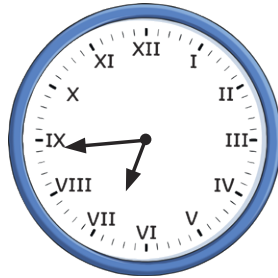
b)



c)



d)



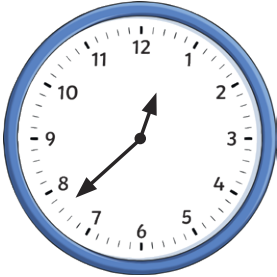
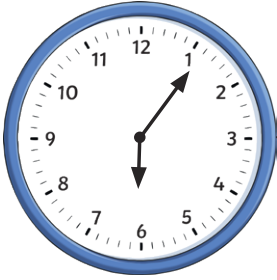
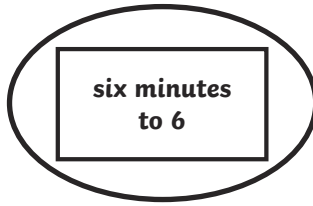
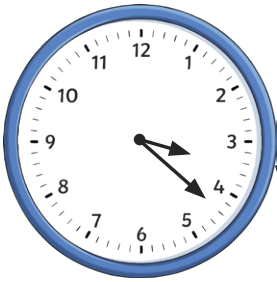
3) a) Twelve minutes to seven

b) Twenty-eight minutes past two

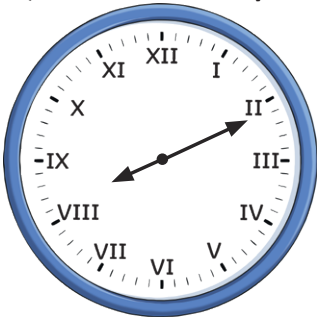


1) The minute hand needs to show seventeen minutes past the hour. B is the correct position for the minute hand to show the time seventeen minutes past 5.

2)



3) a) Eleven minutes past 8.



b) Nineteen minutes past nine.



- 1) a) As the minute hand is positioned with two minutes to the next hour, the time can be two minutes to any hour on the clock.
- b) Two minutes to 1  
Two minutes to 2  
Two minutes to 3  
Two minutes to 4  
Two minutes to 5  
Two minutes to 6  
Two minutes to 7  
Two minutes to 8  
Two minutes to 9  
Two minutes to 10  
Two minutes to 11  
Two minutes to 12
- 2) Although the hour hand would not be touching 10 o'clock for another fourteen minutes, it will still be slightly closer to 10 than the minute hand as it is quite close to being the next hour. As a result, Kaiden is correct.
- 3) a) Emily finishes at twenty-two minutes past 1.  
James also finishes at twenty-two minutes past 1.
- b) Neither child is correct. They both finish practising at the same time.