



Watch the clip about classification. <https://www.bbc.co.uk/bitesize/topics/zn22pv4/articles/z3nbcwx>

Animal groups

Animals can be divided into groups or '**classified**' by looking at the **similarities** and **differences** between them.

Animals are divided into two main groups. Animals that have a **backbone** are called **vertebrates**. Animals that don't have a **backbone** are called **invertebrates**.

Vertebrates and invertebrates are divided into smaller groups. Vertebrates, for example, are divided into fish, amphibians, reptiles, birds and mammals.

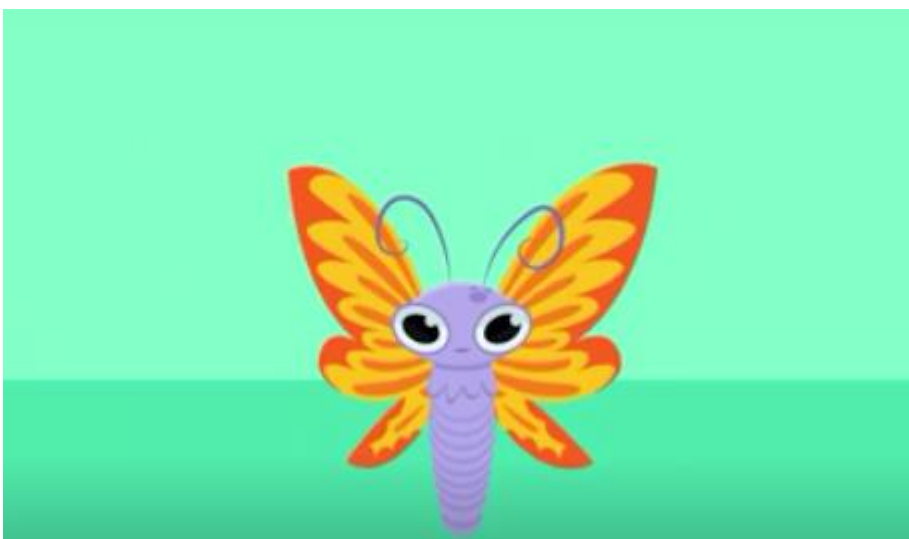
There are many different groups of invertebrates too. They include invertebrates which have soft bodies such as jellyfish, worms and molluscs (like slugs and squids). There are also groups of invertebrates with hard bodies, such as insects, crustaceans and spiders.

Now watch the clip about vertebrates

<https://www.bbc.co.uk/bitesize/topics/zn22pv4/articles/zp6g7p3>



Now watch about invertebrates




<https://www.bbc.co.uk/bitesize/topics/zn22pv4/articles/z8mbqhv>

The difference between invertebrates and vertebrates is?

Scroll down the BBC bitesize page and play the sorting game

▶ Sort the animals into invertebrates and vertebrates.

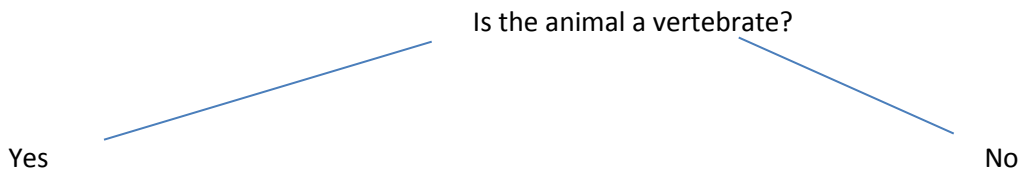
Invertebrate		Vertebrate
		

Check ✓

Can you sort these animals into vertebrates and invertebrates?



When scientists classify creatures they often start with a question:



Challenge – is a snake a vertebrate or an invertebrate?

Answers

Is the animal a vertebrate?

Yes

No



Challenge

A snake is a vertebrate