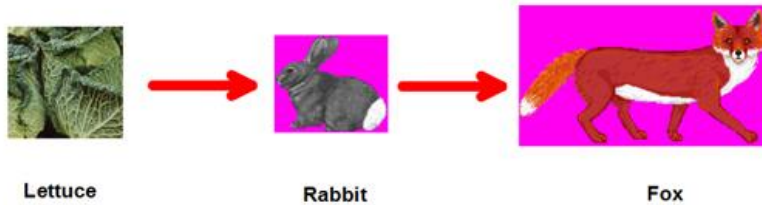


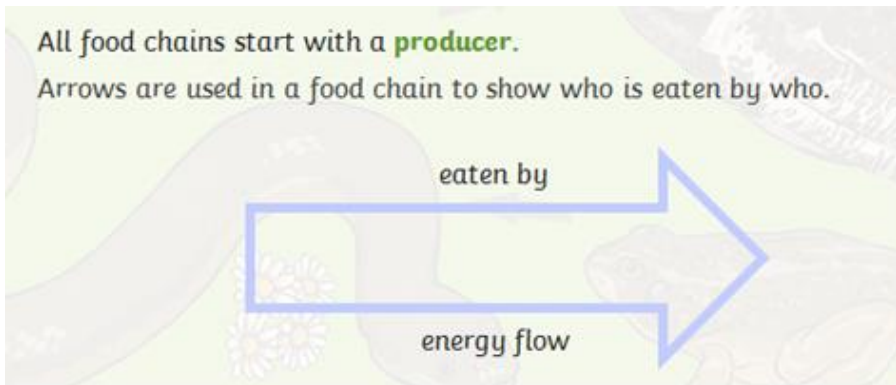
Today we are going to be looking at food chains. Watch the clip below and make notes as you watch it.

<https://www.bbc.co.uk/bitesize/clips/zws87hv>

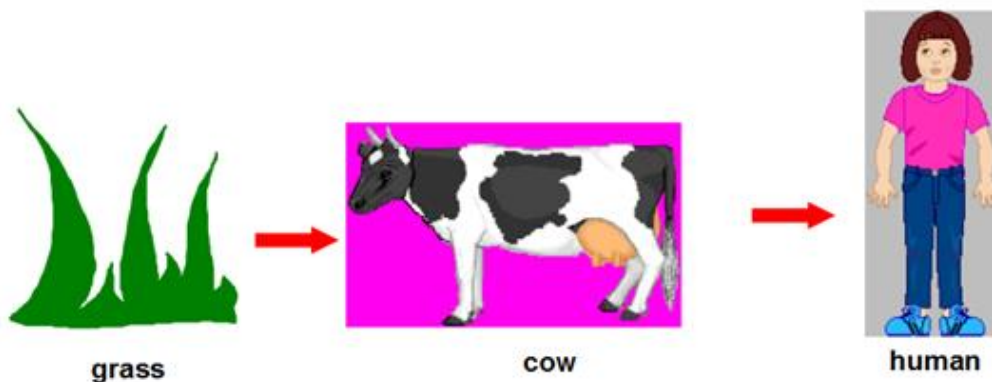
All food chains start with the sun and a green plant.



A food chain starts with what gets eaten and the arrows point to what does the eating.



Here is another example of a food chain





<https://www.bbc.co.uk/bitesize/clips/z2vs34j>

Watch this clip carefully.

Can you draw a food chain to show what eats what ?

Key Words

consumer



producer



prey



predator



Consumers or Producer?

Producers are plants that make their own food.

Consumers are animals that eat food.

Which are **consumers** and which are **producers**?

rabbit



lettuce



lion



broccoli



sea otter



mouse



Match the labels to the pictures.



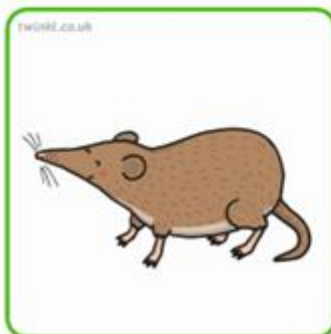
Predator -
eats other animals

Producers - these are plants
and they make their own food
inside themselves.

Consumers -
these are
animals that
consume (eat)
other things

The Food Chain Game

Cut out the squares and make as many food chains as possible.

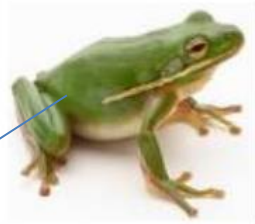






Can you label each part of the food chain as a producer, consumer and predator?

Match the labels to the pictures.



Predator -
eats other animals

Producers - these are plants
and they make their own food
inside themselves.

Consumers -
these are
animals that
consume (eat)
other things

The Food Chain Game

Chains that the children can find:

See if the children can think of any extra ones.

Grass → Rabbit → Fox

Green Plant → Slug → Frog

Grass → Zebra → Lion

Oak Leaf → Caterpillar → Blue tit

Grass → Cow → Human

Decaying Leaf → Earthworm → Shrew → Owl

Plankton → Cod → Seal → Polar Bear

Plankton → Shrimp → Tuna Fish → Shark → Human